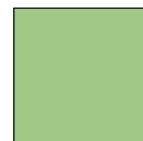
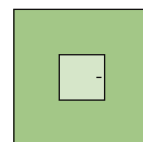
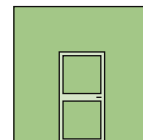
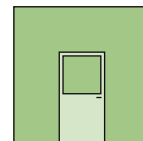
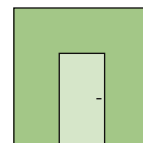


## Technical information



## System Schröders ESN-1

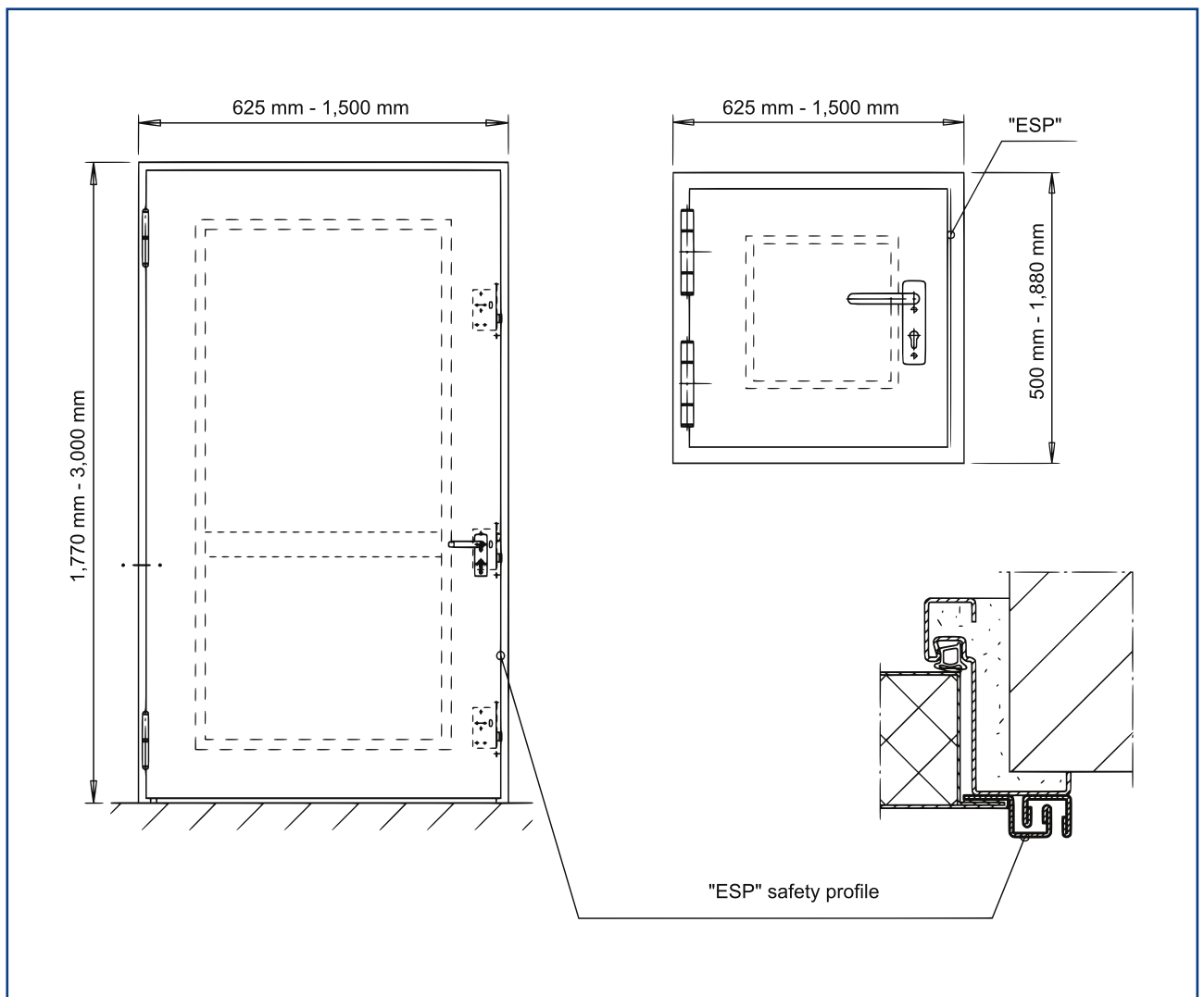
Single-leaf burglar resistance steel door

■ according to EN 1627

■ burglar resistance class **RC4**  
class **RC3**  
class **RC2**  
class **RC1**

## Burglar resistance steeldoor "System Schröders ESN-1"

- **Burglar resistance** according to EN 1627 ff, up to resistance class RC4
- **Thermal transmittance** according to EN ISO 10077-1,  $U_D$ -value  $\geq 1,8$ 
  - optional **acoustic performance** according to EN 20140-3, up to  $R_W (C;C_{tr}) = 45 \text{ dB}^*$
  - optional as **external door** according to EN 14351-1
  - optional as **internal door** according to ENV 14351-2



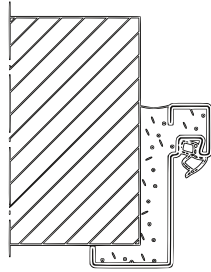
## Technical data

<b>Dimensions</b>	width 625 mm up to 1.500 mm height 500 mm up to 3.000 mm
<b>Door leaf</b>	Leaf thickness 68 / 70 mm - smooth, double-walled plate thickness 1.5 mm to 2.0 mm mineral wool filling (other fillings on request)
<b>Door frame</b>	<b>Door frame "ZNG", elastic rubber seal</b> (optional) corner frame, optional closed frame
<b>Glazing</b> (optional)	Glass dimensions variable <b>minimum frieze width: 130 mm</b> optional cross bars RC4: Glazing according to EN356 min. P6B RC3: Glazing according to EN356 min. P5A
<b>Glazing beads</b>	with concealed screws
<b>Floor seal</b>	optional retractable floor seal or patented sliding seal
<b>Lock options</b>	RC4: - Three-point lock (optional NEMEF, BMH, HZ-Lock, Fliether, Dorma, eff eff) - securing pins - for panic lock with full-surface drilling protection RC3: - Simple locking with single-latch bolt lock min. DIN 18 251 class 3 - optional panic lock (not with glazing) - door height > 2.500 mm: - Three-point lock (optional NEMEF, BMH, HZ-Lock, Fliether, Dorma, effeff) - securing pins
<b>Rebate protection</b>	rebate protection through <b>ESP safety profile</b> (patent-protected)
<b>Hardware / fittings</b>	- optional any appropriate lever handle set - optional panic push-bar - RC4 performance: Security fitting 18257 ES3 - RC3 performance: Security fitting 18257 ES2
<b>Installation</b>	- in masonry - in concrete - in aereated concrete - in steel frame - optional blunt mount
<b>Options</b>	additional safety equipment possible - (magnetic contact, bolt contact, electric door opener) - with door closers  thick rebate design stainless steel <b>further versions</b> on request

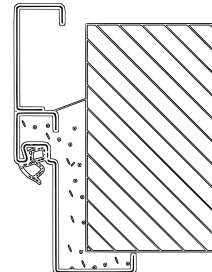
# Installation variants

## Installation in

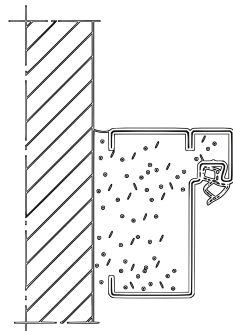
Masonry /  
concrete



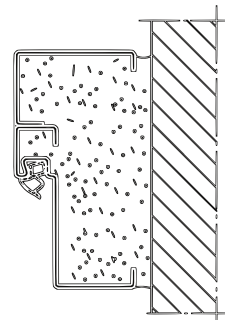
Corner frame  
Corner with counter frame



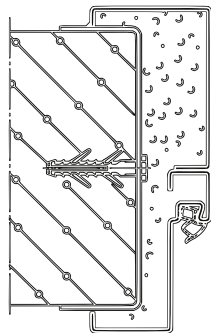
Masonry /  
concrete



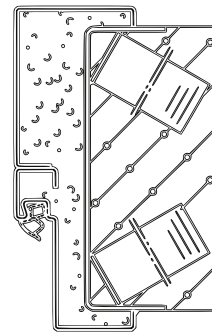
Block frame  
Corner with counter frame



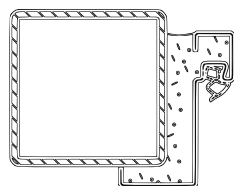
Aerated  
concrete



Wrap-around frame  
Corner with counter frame



Steelprofile



Corner frame  
optional with  
tube, L- oder U-profil

