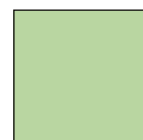
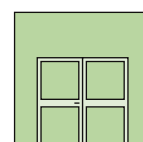
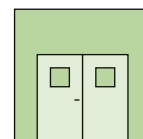
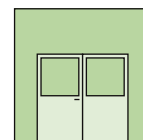
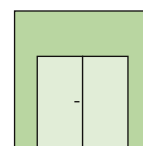


## Technical Information



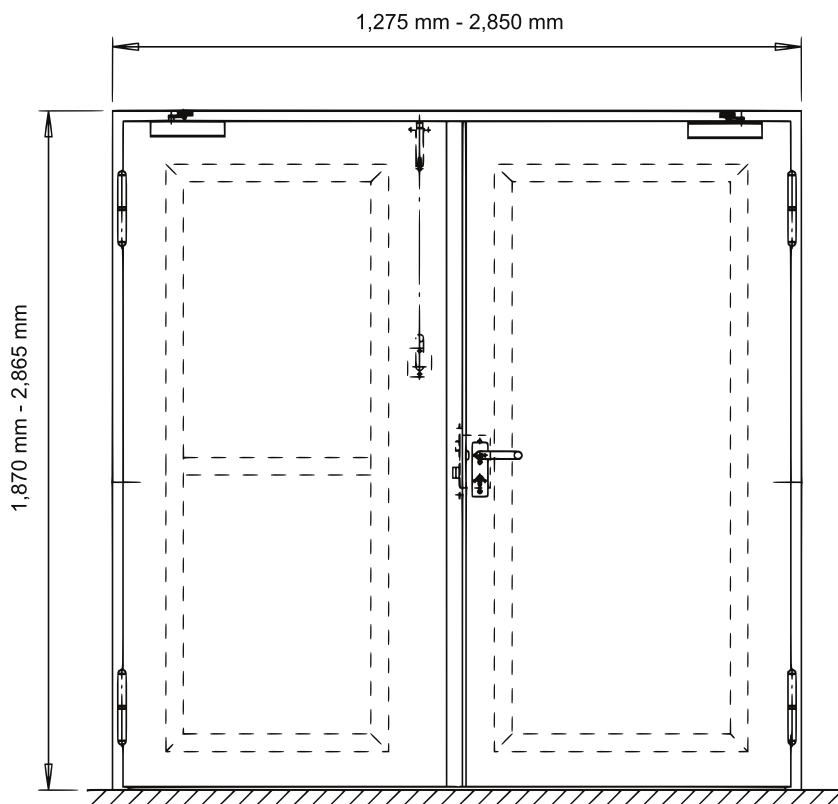
### System Schröders EIS-2

#### Double-leaf steel fire door EI<sub>2</sub> 60 / E 60 / EW 60

- according to EN 1634-1  
ENV 13501-2
- optional in stainless steel
- optional with glazing
- optional in combination with **smoke control**  
according to EN 1634-3
- optional in combination with **air tightness**  
according to EN 12207  
up to class 3

## Fire door "System Schröders EIS-2"

- **Fire resistance** EI<sub>2</sub> 60 / E 60 / EW 60  
tested in accordance with EN 1634-1  
Classification report WFRC 302467 according to EN 13501-2
- **Optional performance characteristics**
  - **Smoke control** S<sub>a</sub>/S<sub>200</sub> tested according to EN 1634-3
  - **Air tightness** according to EN 12207, up to class 3
  - **Resistance to wind load** according to EN 12210, up to class C4
  - **Watertightness** according to EN 12208, class 3A
  - **Pressure and suction resistance** to 3,800 Pa



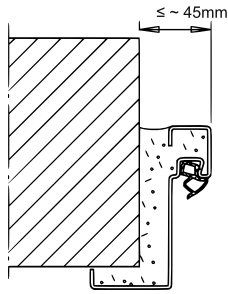
## Technical Data

<b>Dimensions</b>	Width	up to <b>2,850 mm</b>
construction standard	Height	up to <b>2,865 mm</b>
	asymmetrical split optional	
<b>Door leaf</b>	Leaf thickness 68/69 mm – smooth, double-walled, galvanized, optionally stainless steel, plate thickness up to 1.5 mm	
	- Insulation inlay optionally covered with a fully adhering cover sheet, to result in a super smooth and flat door leaf	
	- „Thecsol-110“-fire protection strip on the door leaf edges	
<b>Door frame</b>	<b>Door frames "System Schröders"</b> (see installation variants)	
	optional with elastic smoke protection seal	
	Corner frame profile, three- or optionally four sided wrap-around frame option	
	<b>Door leaf and frame optionally in stainless steel</b>	
<b>Glazing</b> (optional)	Glass dimensions variable, max. 942 x 2,155 mm per panel	
	<b>Minimum frieze width: 130 mm</b>	
	optional cross bars	
<b>Floor seal</b>	required for increased air tightness, driving rain tightness	
	optional	lowering floor seal or four-sided frame seal
<b>Lock options</b>	<u>Swing doors</u>	
	Latch lock according to EN 12209	
	Profile cylinder prefab (without cylinder)	
	optionally with multiple interlock	
	optionally with panic lock	
	<u>Fixed door panel</u>	
	Inside safety latch (closing towards the top)	
	optional rebate cremone bolt with up or downward locking bolt	
	optional	Lock(s) with panic lock
		Cremone lock
	Securing bolts on both door panels	
<b>Hardware/Fittings</b>	Swing doors	optional any appropriate lever handle set
		optionally panic push-bar
	both wings with door closers according to EN 1154, door coordinator device for each wing	
	2/3-piece KO-door hinges	
	optionally swing door opener according to EN 1155	
<b>Installation</b>	- in masonry	
	- in concrete	
	- in fire proof mounting walls	
	- in steel columns or beams	
	- optionally blunt mount between the recesses	
<b>Options</b>	- additional safety equipment possible (magnetic contact, bolt contact, electric door opener ...)	
	- with door closers	
	- thick rebate design (development in progress)	
	- protective kick plates ≤ 1.5 mm on the door panels	
	- door panels covered with laminates or genuine wood veneer ≤ 1.5 mm	
	- <b>additional versions</b> upon request	

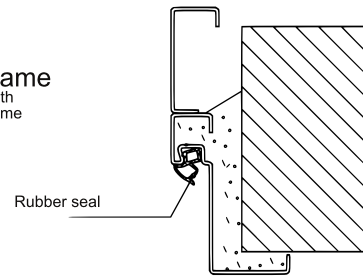
# Installation Variants

## Installation in

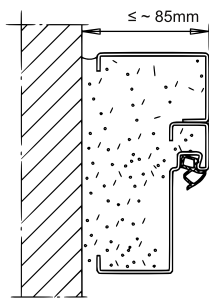
Masonry /  
concrete



Corner frame  
Corner with  
counter frame

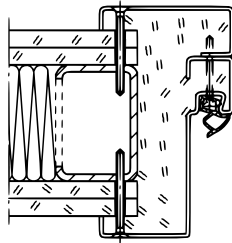


Masonry /  
concrete

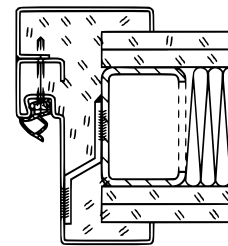


Block frame  
Corner with  
counter frame

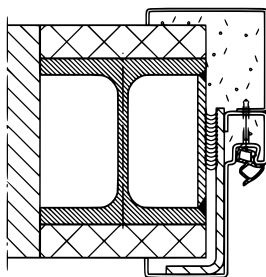
Flexible wall



Wrap-around frame  
Corner with  
counter frame



Covered  
steel columns /  
steel beams



Wrap-around frame  
Corner with  
counter frame

